

# Public Risk Conference

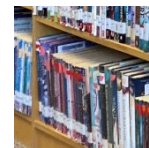
## Day 2 Slide Deck

June 2, 2026



# Lighting Networking

Morning Session



# Lightning Networking

Discuss in your table groups

If you could fix one recurring issue in your municipality instantly, what would it be?

What's stopping it from being addressed now?



# A Tale of Two Cities and Beyond

---

JUNE 2, 2026

ABMUNIS' 2026 PUBLIC

RISK CONFERENCE

PRESENTED BY DDC LAWYERS

MONELLE D. STURKO

NICOLE PEPIN



# ABOUT US

---

Monelle & Nicole

- Municipal Insurance Defence
- Insurance Defence
- Wrongful Dismissal
- Fatalities

# Refresher on Sources of Law

---

## 1. Common Law

- I. Judge Made Law

## 1. Statutes

- I. Legislation (Municipal Government Act)

# Two Forms of Attack on Municipalities

---

- Example: car accident, sewer line back up, slip & fall, etc.
- Common Law
  - Negligence
    - Duty of Care
      - Municipality must owe a duty of care
    - Failure to Meet Standard of Care
      - Municipalities' behaviour falls below the requisite standard
    - Causation
      - The negligence caused the loss
    - Damages
      - The Plaintiff suffered damages
- Legislative
  - Breached a provision of the MGA (e.g. s. 532)
    - Duty and Control
      - Municipality has control of the public work
    - Public work in state of disrepair
      - The public work is not in a reasonable state of repair given the character of the area
    - Knowledge
      - The municipality knew, or reasonably should have known
    - Causation
      - The state of disrepair caused the Plaintiff's damages

# A Tale of Two Cities: Calgary and Nelson

---

- Common Law: Nelson v. Marchi
  - Establishes common law liability for non-core policy decisions and operational decisions and clarifies the test to determine when a municipality owes a duty of care.
- Statutory: Pyke v. Calgary (City)
  - Confirms statutory duty under s. 532 of MGA to keep roads in reasonable state of repair

# Nelson v. Marchi: Core Policy Decisions

---

- Issue was whether the specific snow clearing that the municipality undertook made it immune from liability because it was a core policy decision.
- The test to determine whether the decision was a ‘core policy’ decision is four factors:
  1. The level and responsibilities of the decision-maker
  2. The process by which the decision was made
  3. The nature and extent of the budgetary considerations; and
  4. The extent to which the decision was based on objective criteria

# Nelson v. Marchi: the Municipalities' Evidence

---

- In terms of whether the decision about snow clearing was a “core policy” or not, consider the evidence put forward by the City:

“the City’s decision bore none of the hallmarks of core policy. Although the extent to which the supervisor was closely connected to a democratically-elected official is unclear from the record, **she disclosed that she did not have the authority to make a different decision with respect to the clearing of parking stalls** (the first factor). In addition, there is no suggestion that the method of plowing the parking stalls on Baker Street resulted from a deliberative decision involving any prospective balancing of competing objections and policy goals by the supervisor or her superiors. Indeed, there was no evidence suggesting an assessment was ever made about the feasibility of clearing pathways in the snowbanks; **the City’s evidence is that this was a matter of custom** (the second factor). Although it is clear that budgetary considerations were involved, **these were not high-level budgetary considerations** but rather the day-to-day budgetary considerations of individual employees (the third factor)”

# Nelson v. Marchi: Practical Considerations

---

- Work with operations teams to ensure they understand:
  - Prioritizing public safety repairs and works
  - When to limit the use of a road or other public space to minimize risk of injury
- Document:
  - Discussion of budgetary constraints when dealing with prioritizing repairs and public works
  - Discussions of objective criteria when making decisions about prioritizing repairs and maintenance of public works

# Pyke v. Calgary (City): Duty to Repair

---

- Issue was battle between two sections of the MGA:

## Inspections and maintenance

530 (1) A municipality is not liable for damage caused by

(a) A system of inspection/ maintenance, or the manner in which inspections are to be performed, or the frequency, infrequency or absence of inspections

## Repair of roads, public places and public works

532(1) Every road or other place ... must be kept in a reasonable state of repair by the municipality, having regard to

(a) The character of the road, public place or public work

# Pyke v. Calgary (City): MGA Fight

---

- The Alberta Court of Appeal agreed with the lower Court, s. 532 takes priority over s. 530:

“In our view, s. 530 is justly interpreted as protecting municipalities from liability for their discretionary planning or design choices in relation to the inspection and maintenance of roads and public spaces. It does not otherwise absolve the City from liability for a breach of its statutory duty to keep “[e]very road or other public place that is subject to the direction, control and management of the municipality

- Some fun commentary: this sounds a lot like immunity for ‘core policy’ decisions from Marchi, even though we are in the statutory context, not the common law context

# Pyke v. Calgary (City): Practical Considerations

---

- Ensure your municipality has:
  - Updated policies about monitoring and inspecting public spaces to ensure it knows about required repairs
  - Quick turn arounds for repairing and maintaining public works, if not, ensure proper signage is put up to ward off the public

# Newer Cases

---

- Legare v. Acme (Village)
  - The owners of a home sued the village after a sewer pipe back up.
  - There was evidence that the Village knew that the sewer line was too small and note in accordance with Provincial standards.
  - The appeal Court agreed with the lower Court in that once the Village knew that the sewer line was too small:

“it had a choice, it could either upgrade the sewer line to the required standard or it could implement a heightened regimen of inspection and maintenance”
- Practical Considerations: seems to suggest increased maintenance for public works of concern. Better to be on safe side and repair.

# Newer Cases

---

- Weiler v. London, 2026 ONSC 2011

- Pedestrian sustained serious injury after tripping and falling on raised edge between two city sidewalk slabs during the pandemic.
- The City called four employees to testify about their sidewalk inspection program and the impacts on the same from the pandemic.
- The Court found that:

“I conclude that the evidence overwhelmingly demonstrates the decision not to inspect the sidewalk was based on public policy considerations for which the City should not be second-guessed by the Court. Any liability arising from failure to inspect the sidewalk is subject to core policy immunity”

# Newer Cases

---

- 3311876 Nova Scotia Limited v. Trenton (Town), 2023 NSSC 60
  - An owner's rental property flooded after a significant rain event
  - The Town knew the culverts adjacent to the property were in a state of disrepair
  - However, Town adduced evidence that:
    - The Town Council made the decision to set aside the culvert repairs.
    - The decision-making process was fulsome in that it contemplated short and long-term infrastructure project.
    - The Town had significant budgetary constraints
    - The Town had a long list of infrastructure projects, but had to prioritize
  - The Court found no duty of care, but the decision was sent back to an Adjudicator for another reason.

# Summary of Practical Considerations

---

- Work with operations teams to ensure they understand:
  - Prioritizing public safety repairs and works
  - When to limit the use of a road or other public space to minimize risk of injury
- Document:
  - Discussion of budgetary constraints when dealing with prioritizing repairs and public works
  - Discussions of objective criteria when making decisions about prioritizing repairs and maintenance of public works
- Ensure your municipality has:
  - Updated policies about monitoring and inspecting public spaces to ensure it knows about required repairs
  - Quick turn arounds for repairing and maintaining public works, if not, ensure proper signage is put up to ward off the public

Thank You!

Please Contact Us  
With Any Questions!

---

DDC Lawyers

---

Monelle

[msturko@ddc-lawyers.com](mailto:msturko@ddc-lawyers.com)

---

Nicole

[npepin@ddc-lawyers.com](mailto:npepin@ddc-lawyers.com)

---



# Can you Spot the Risk?

Step into the Shoes of a Risk Inspector

Presented by: Shamair Turner B.Comm, CRM, CIP

AB Munis Public Risk Conference | June 2





# Overview

1. Who Are We?
2. What is a Property Risk Management Survey?
3. How to Prepare for an Inspection
4. What Happens During an Inspection
5. Can you Identify the Risk?
6. Value of a Risk Inspection
7. Key Takeaways
8. Questions



# Who are we?

Suncorp Valuations - Appraisal and Risk Control company providing value added services to assist our clients in managing their assets.

We have proudly been a service provider for the Alberta Municipalities for over 5 years

Our objective is to position ourselves as a resource to support your Risk Mitigation strategy.



## Brand Promise

**01**

**On-Time**

**03**

**Professionally  
Presented  
Reports**

**02**

**Credible**



# How to Prepare for an Inspection?

- Site Contact(s)
- Logistics
- Compile information requested
- Prepare any questions you may have



# What Happens During an Inspection?

- Meet & Greet
- Questions
- Site Walkthrough w/photos
- Finding Highlights



# What is a Property Risk Management Survey?

A formal, impartial evaluation of a facility and the risks associated with its use/operation.

## Report Structure

- Building Details
- Common Hazards
- Fire Protection
- Premises Liability
- Crime Controls
- Facility Specific Supplements
- Recommendations



# Reading Recommendations

Exposure – what risk area the recommendation falls under (Property, Liability or Crime)

Risk Rating – how urgent or concerning the item is

Property Area – where in the facility issue was found

Reference – the code or regulation the recommendation addresses

| RECOMMENDATIONS <input type="checkbox"/> N/A |  |
|--|--|
| Risk Rating                                  | Definitions  |
| High   | Immediate attention required to minimize potential loss. Implement within the next 3 months. |
| Moderate                                     | Attention required to minimize a potential loss. Implement within the next 12 months.        |
| Low  | Desired improvement should minimize a potential loss. Loss Control – Best Practice           |

| Recommendation Number: 2024-00  | Risk Rating: -----select----- |
|---|-------------------------------|
| Exposure: <input type="checkbox"/> Property <input type="checkbox"/> Liability <input type="checkbox"/> Crime |                               |
| Property Area: <input type="checkbox"/>   |                               |
| Picture   | Recommendation                |
|   | Reference                     |



# Ready to Test Your Skills

## Risk Categories

Property  
Liability  
Crime

## Difficulty Level

Basic  
Moderate  
Advanced

## Recommendations

How would the issue be resolved?



# BASIC

Level 1



# Example 1: What Looks Concerning?



# Example 1: What Looks Concerning?

Hallway not clear



Shelves blocking the exit





# Liability: Egress – Clear Hallways & Exits

## Recommendation

To help ensure quick and clear access to emergency exits in the event of a fire, all hallways should be kept clear of storage and furniture items at all times.

There should be at least 4ft of clearance in a hallway and an unobstructed amount of space around an exit door.



# Liability: Egress – Clear Hallways & Exits





## Example 2: What Looks Concerning?





# Liability: Life Safety – Exit Signage





# Liability: Life Safety – Exit Signage

## Recommendation

Adequate emergency exit signage allows occupants to effectively egress from the building using the determined emergency routes.

Exit signage should be installed at all exterior exits from the building. Signage should be continuously illuminated and inspected on a regular basis to ensure continued functionality.



# Liability: Egress –Exit Signage





## Example 3: What Looks Concerning?





## Example 3: What about here?



# Property: Fire Prevention - Combustibles



Combustible storage too  
close to heating  
appliances

Combustible storage too  
close to electrical





# Property: Fire Prevention – Combustibles

## Recommendation

An acceptable level of housekeeping should be maintained within all mechanical/electrical room(s) and in particular, charged electrical equipment must be clear of any storage materials.

Service rooms should not be used for storage. Accumulation of combustible materials and general clutter should be limited so the building's potential fire load is not excessively increased and ensures all exit routes remain clear. Remove combustible content and maintain a clearance of three (3) ft around all electrical panels.



# Property: Fire Prevention – Combustibles





# MODERATE

Level 2



## Example 1: What looks concerning?





# Property: Water Damage - Drainage





# Property: Water Damage - Drainage



## Downspout Protection

Downspouts around the building drain right next to the building foundation.



# Property: Water Damage – Drainage

## Recommendation

Consideration should be given to extending all downspouts to ensure that all water is directed well away from the building.

Ensure qualified staff regularly inspect around building and that downspouts/extensions are in place directing water away from the facility.



# Property: Water Damage - Drainage





## Example 2: What looks concerning?





# Property: Fire Detection – Fire Stopping



Missing Ceiling  
Tile

Open  
seals/penetrations





# Property: Fire Detection – Fire Stopping

## Recommendation

To help minimize movement of smoke and heat and ensure quick activation of fire suppression systems in the event of a fire. All missing ceiling tiles should be replaced.

It is also recommended that rooms with penetrations to other rooms in the facility be sealed properly by an approved fire stop to provide a level of protection for the spread of smoke and or flame in the event of a fire.



## Example 3: What looks concerning?





## Example 3: What looks concerning?





# Liability: Injury Prevention - GFCI



Missing Ground  
Fault Circuit  
Interrupter Outlet





# Liability: Injury Prevention - GFCI

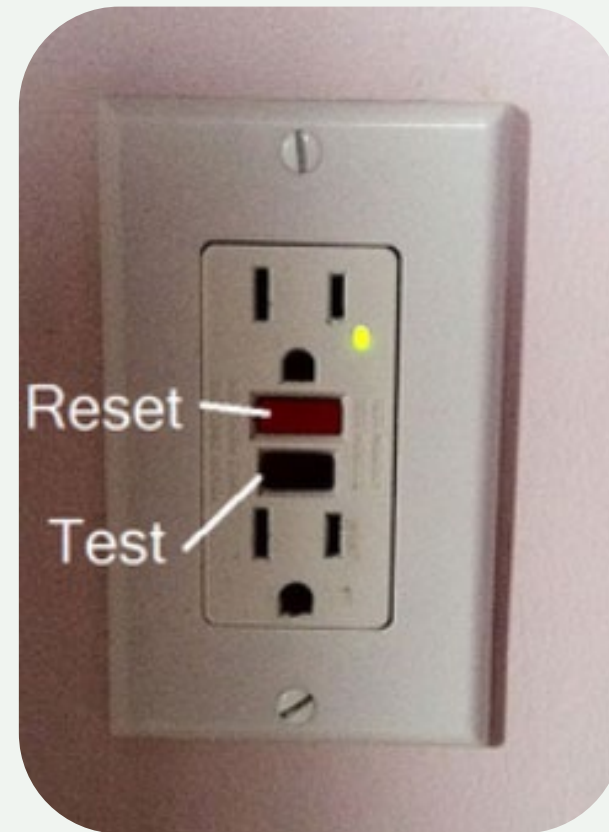
## Recommendation

Electrical outlets installed near water taps or sources of moisture increase the risk of electrocution (or ground fault). If an appliance is plugged into an outlet protected by a GFCI, the power will be shut off before a fatal shock can occur.

Ground-fault circuit interruption (GFCI) protection is required in receptacles or outlets installed within 1.5 m of a nearby water source. Ensure all electrical outlets within 1.5 m are GFCI-protected and they are tested on a regular monthly basis to ensure their good working condition.



# Liability: Injury Prevention - GFCI





# ADVANCED

Level 3



# Example 1: What looks concerning?





# Example 1: What about here?



# Crime: Security - Vandalism



Evidence of Vandalism (Graffiti)



# Crime: Security - Vandalism

## Recommendation

When evidence of vandalism is observed rapid and effective removal of existing graffiti is crucial to discourage further vandalism. This is most important in visible areas.

To prevent graffiti on buildings, a multi-pronged approach is recommended depending on the frequency and severity. This includes implementing security measures like additional lighting, cameras, using anti-graffiti coatings in highly vulnerable areas, and/or restricting access to vulnerable areas with barriers.



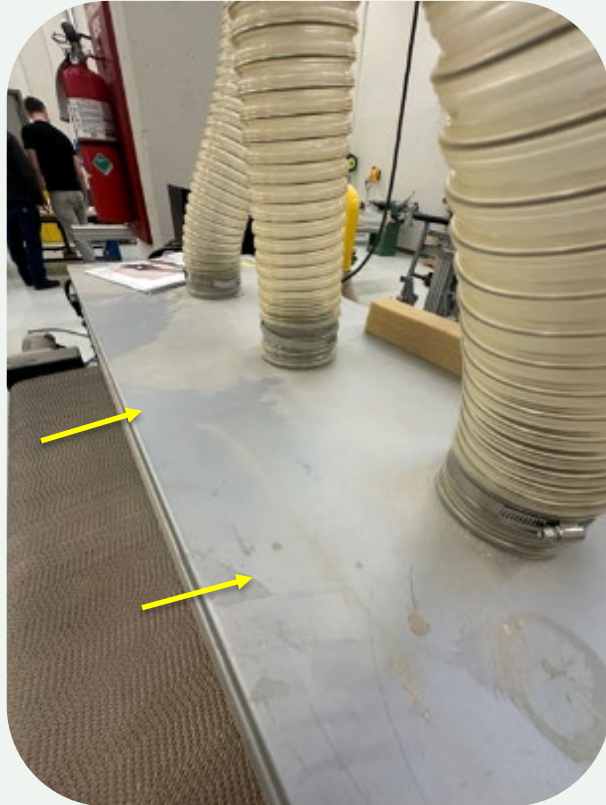


# Example 2a: What looks concerning?





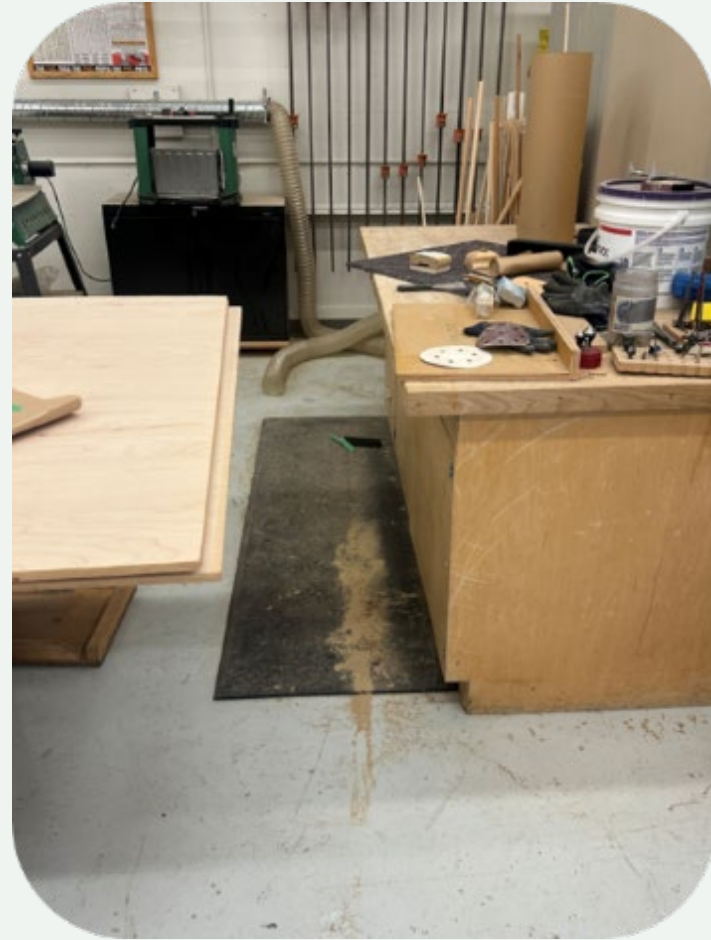
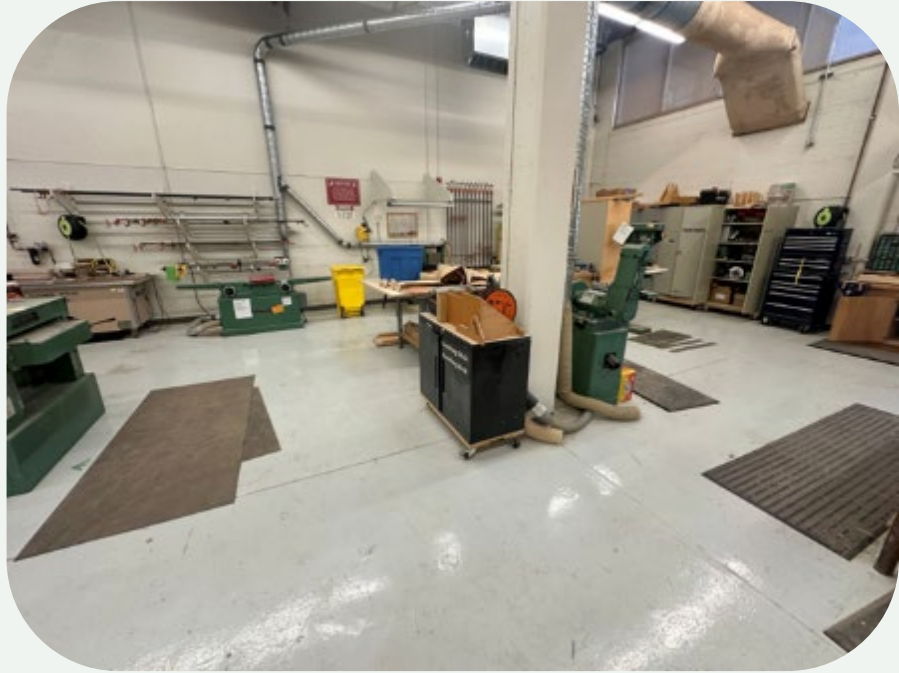
# Property & Liability: Fire & Injury Prevention – Dust Collection and Slip & Fall



**Dust on Equipment & Wood Shavings on Ground**

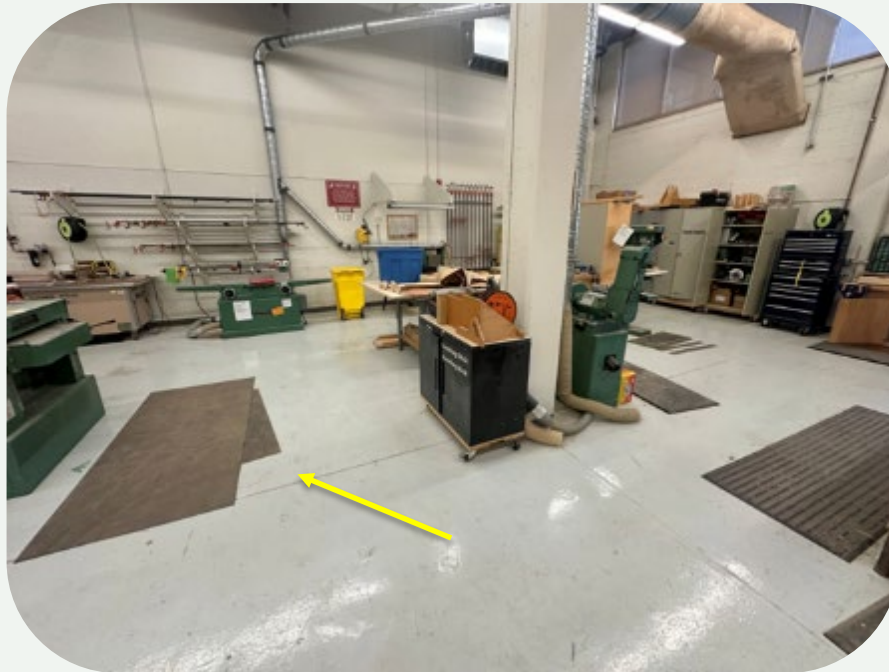


## Example 2b: What looks concerning?

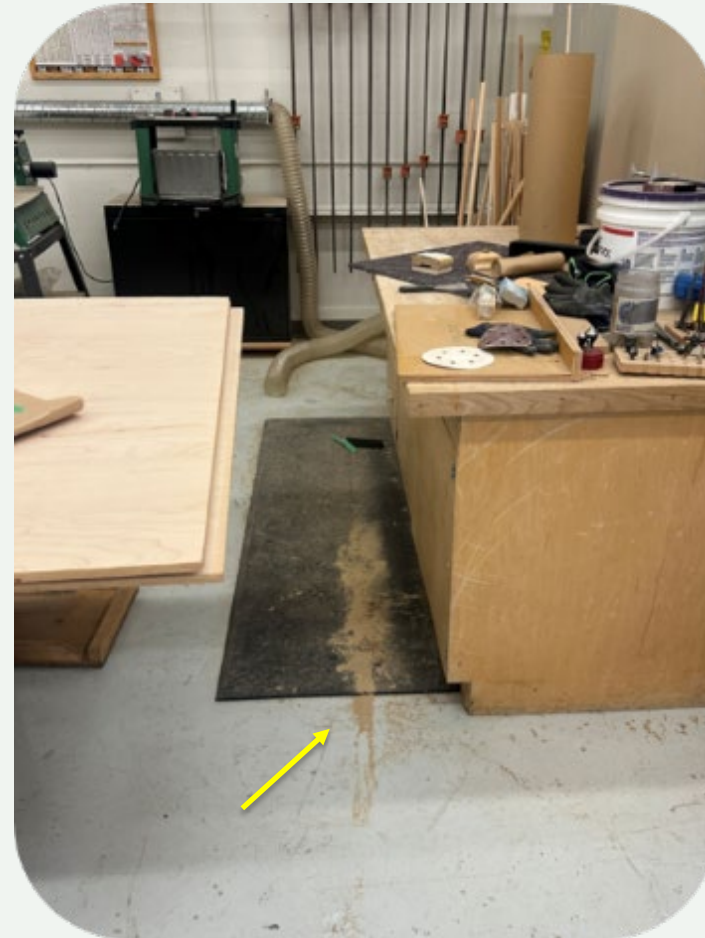




# Property & Liability: Fire & Injury Prevention – Dust Collection and Slip & Fall



**Unsecured Mat & Wood Shavings on Ground**





# Property & Liability: Fire & Injury Prevention – Dust Collection and Slip & Fall

## Recommendation

An accumulation of dust was noted in all areas of the wood shop. A daily sweep program should be established to minimize fire and slip hazard. This will limit the build-up of dust within the building and the potential fire hazard associated with this type of material. For the dust noticed on surfaces this can be connected to issues with the dust collection system. We recommend a review to ensure proper use and function for the space.

Mats can present a tripping hazard. In shops they should be secured to the ground or alternatives utilized. Goal is to prevent slipping or curling of edges with rubber insert strips alternative grip.





## Example 3: What looks concerning?





# Liability: Injury Prevention – Tipping Hazard





# Liability: Injury Prevention – Tipping Hazard

Vending machine  
not fixed to a wall





# Value of a Risk Inspection program

## **Enhance Public Trust & Service Continuity**

Promote safe, reliable municipal facilities

## **Protect People & Public Safety**

Identify hazards before incidents occur (fire, structural, accessibility)

## **Reduce Financial Loss & Liability**

Prevent costly claims, lawsuits, and insurance losses

## **Extend Asset Life & Performance**

Detect deterioration early (roofing, HVAC, building envelope)

## **Strengthen Governance & Compliance**

Provide defensible documentation for audits and claims

## **Enable Better Decision-Making**

Allocate resources to highest-risk buildings/issues




# Key Takeaways

**Everyone has a Role to Play**

**Small Steps – Big Impact**

**Low-Cost Solutions**

**We are here to Help**



# Questions & Discussion

Thank you

Shamair Turner B.Comm. CRM, CIP  
Manager, Risk Management  
[shamair.turner@suncorpvaluations.com](mailto:shamair.turner@suncorpvaluations.com)



**WRCC | CRFFC**

# **Why Community Wildfire Preparedness Matters**

## **Wildfire Resilience Consortium of Canada**

Matthew Kristoff, RPF

Regional Wildfire Knowledge Network Coordinator

Alberta Municipalities Public Risk Conference | June 2, 2026





**WRCC | CRFFC**

Wildfire Resilience Consortium of Canada  
Consortium pour la Résilience aux Feux de Forêt du Canada

## Our vision

Providing all Canadians access to wildfire knowledge for a more resilient future.

## Our mission

**Engage** with everyone in the wildland fire ecosystem and beyond; **Connect** knowledge holders, generators, and users; and **Accelerate** innovation in wildland fire management using a whole-of-society approach.

# Community Impacts

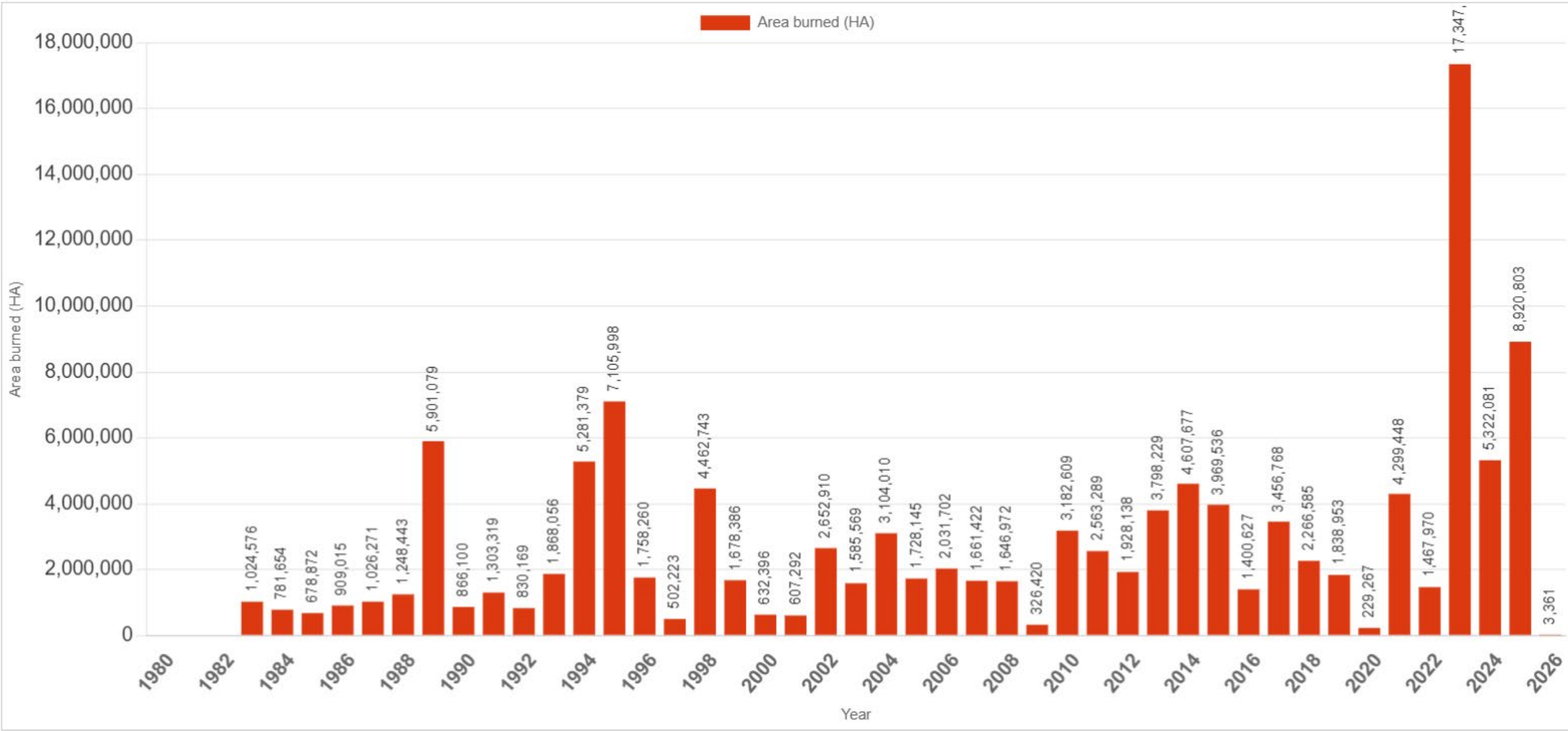


**“Do Nothing” looks like this**

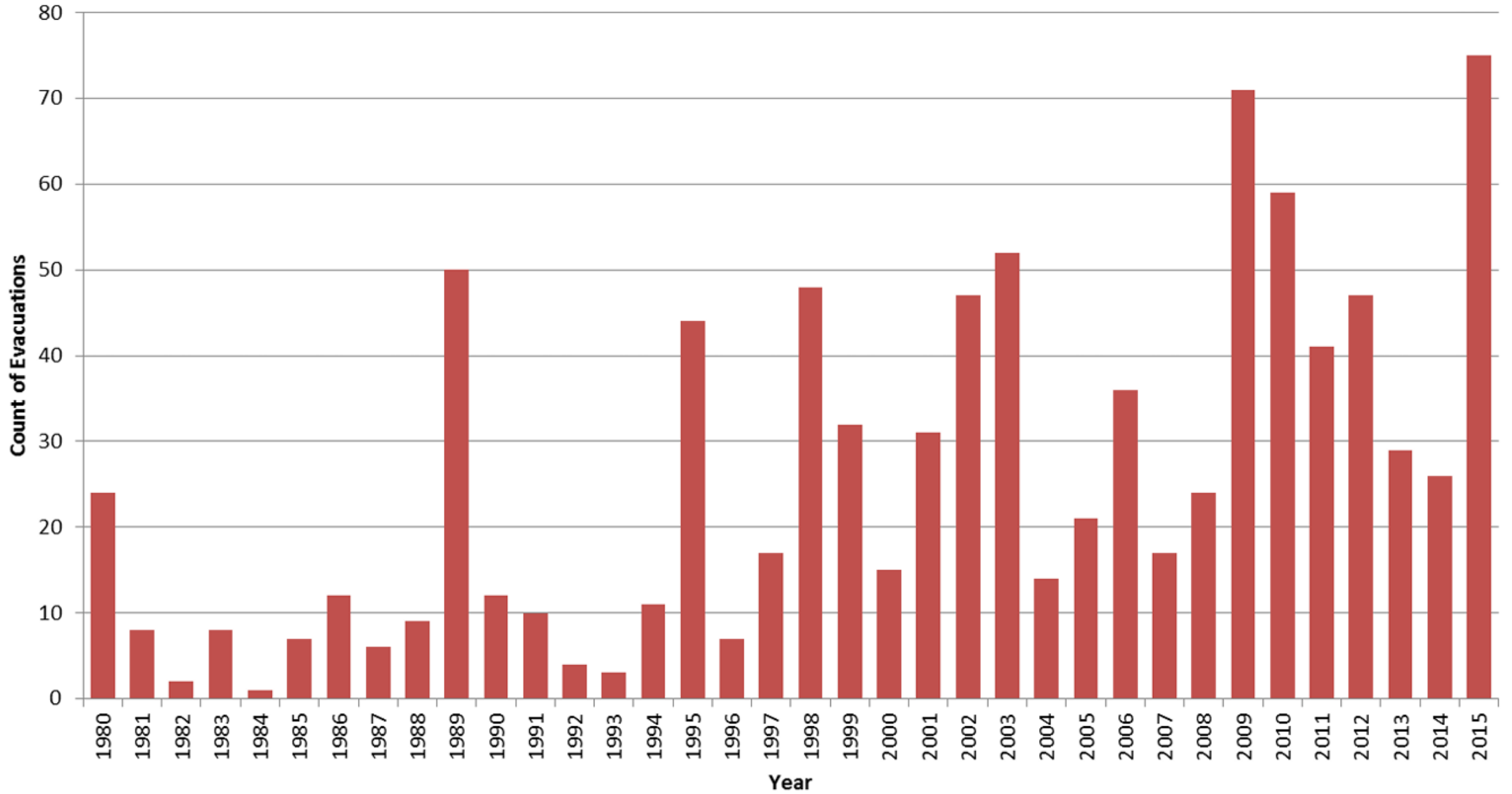


Photo Credit: The Globe and Mail

# Annual Area Burned in Canada

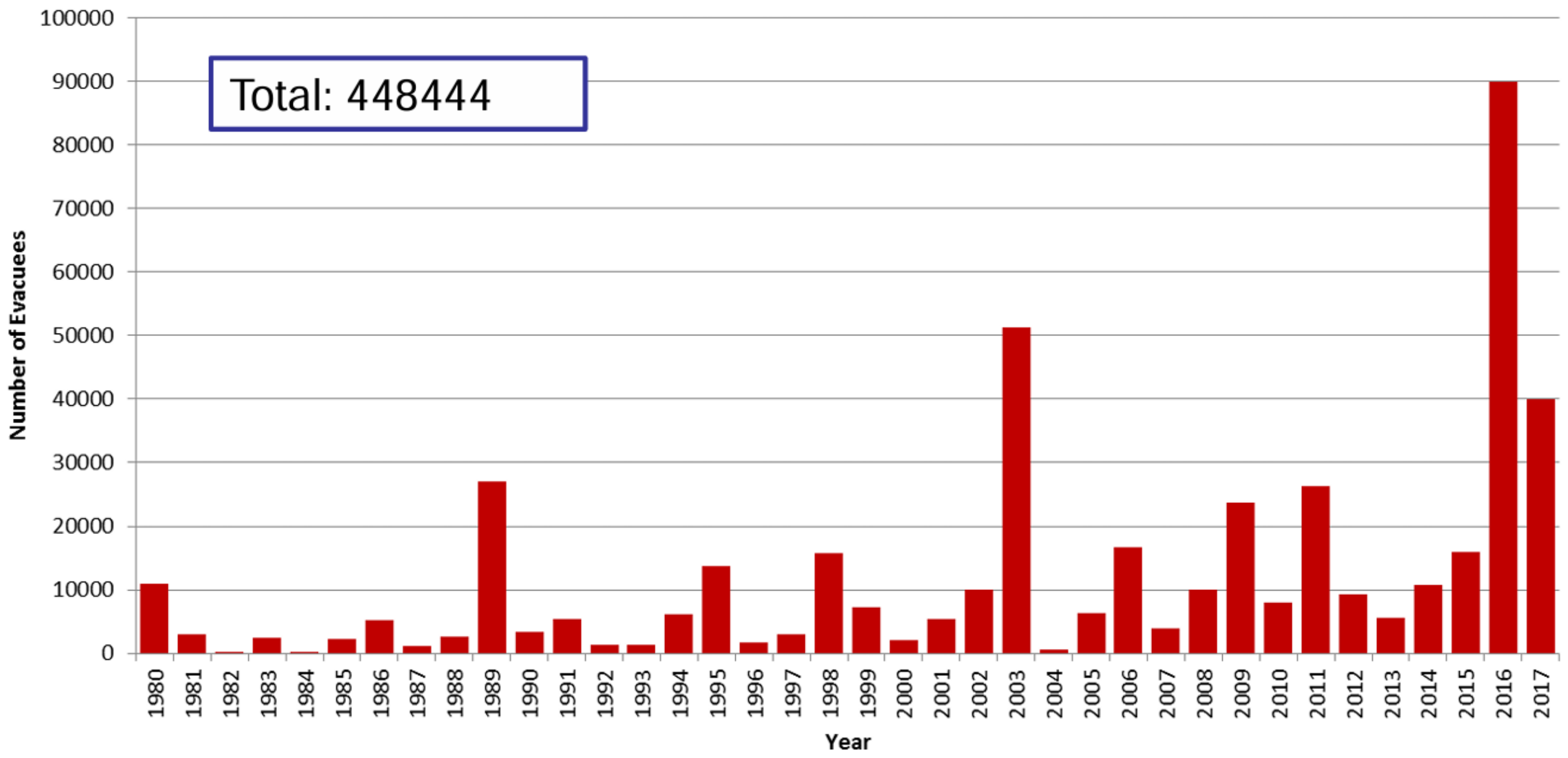


# Number of Wildfire Evacuation Events in Canada (1980-2015)

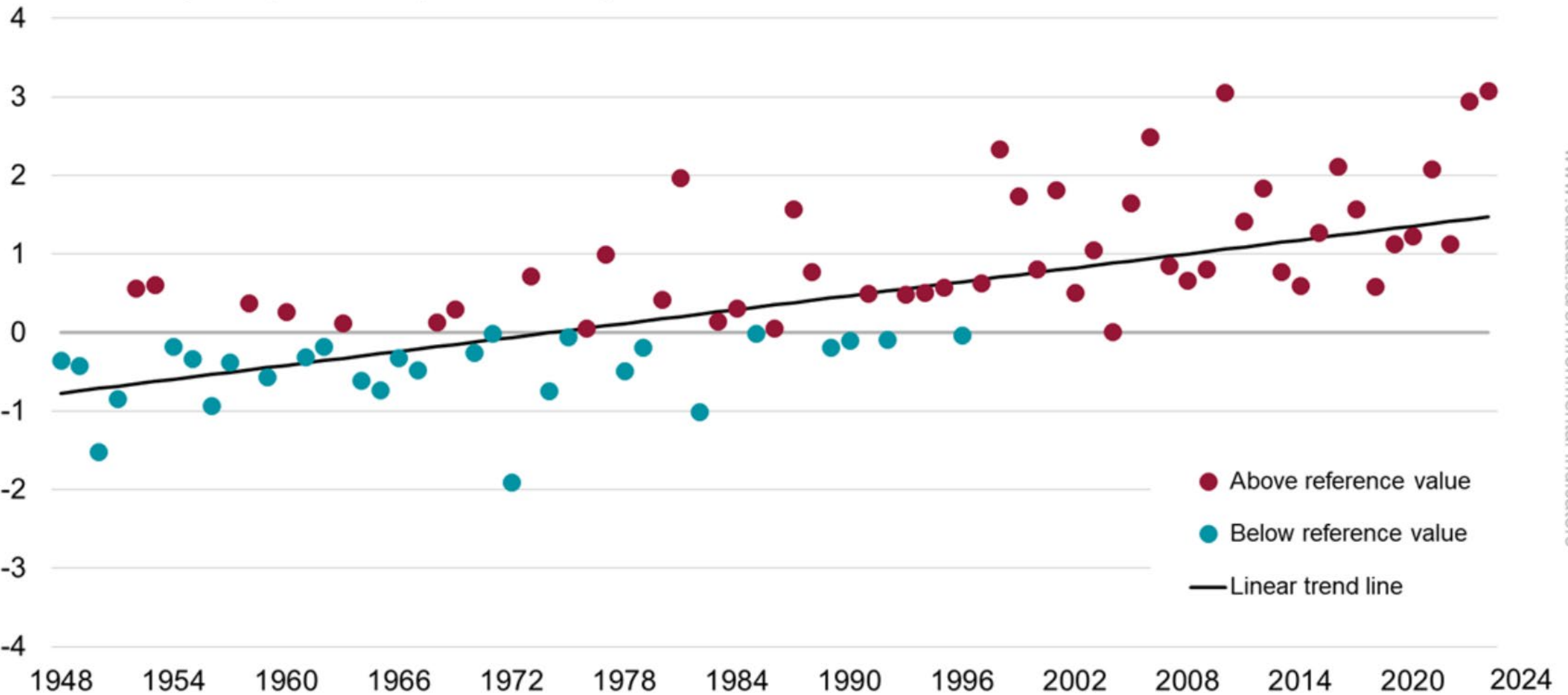


# Number of Wildfire Evacuees in Canada 1980-2017

Total: 448444



### Annual average temperature departures in degrees Celsius



www.canada.ca/environmental-indicators

# Investment Case

## World Economic Forum

- \$1 invested in wildfire-resistant construction could save \$210 in avoided future economic losses.



Institute for Catastrophic  
Loss Reduction  
Building resilient communities

Institut de prévention  
des sinistres catastrophiques  
Bâtir des communautés résilientes



## Institute for Catastrophic Loss Reduction

- Every \$1 spent could save up to \$30 in recovery costs.

**Good News:  
Solutions Exist!**





**WRCC | CRFFC**

**Matthew Kristoff**  
**Regional Coordinator - Boreal West**

[Matt.Kristoff@wrcc-crffc.com](mailto:Matt.Kristoff@wrcc-crffc.com)

**825-202-3205**

Website:

[Together Transforming Wildfire Management in Canada | WRCC - CRFFC](#)

Alberta Municipalities' 2026 Public Risk Conference • Edmonton, AB

# Wildfire resilience in Alberta, The Reframe

*Strengthening Community Wildfire Resilience*

---

**Michael Coutu**

FireSmart Specialist

Government of Alberta • Forestry and Parks



THE CORE TRUTH

**“The reality is we will never prevent all wildfires, but we can take steps towards reducing the negative impacts”**

— Minister Todd Loewen, Alberta Wildfire Mitigation Strategy (March 2026)

# 01

PART ONE

## What brought us here?

*A decade of wildfires that rewrote the rules.*



## THE PATTERN

# These are not isolated events.

*Six wildfires shaped how Canada — and Alberta — think about community protection.*

**2003**

**KELOWNA, BC**

240 homes lost • \$150M

**2011**

**SLAVE LAKE, AB**

354 homes lost • \$800M

**2016**

**FORT McMURRAY**

2,400 structures • \$3.6B

**2021**

**LYTTON, BC**

151 structures • \$78M

**2024**

**JASPER, AB**

358 structures • \$880M

**2025**

**CHIPEWYAN LAKE**

27 structures • Critical infrastructure lost

# 02

PART TWO

## The reframe.

*Alberta is asking us to reconsider our relationship with fire.*



# Fire is not a monster. It's a feature.

*Alberta's boreal forest evolved with fire. Our dominant tree species are not merely tolerant of fire — they depend on it.*



## SEROTINOUS CONES

Lodgepole pine and jackpine cones are sealed with resin. They open — and release seeds — only with the intense heat of fire.



## NUTRIENT CYCLE

Fire returns nutrients locked in dead vegetation to the soil, stimulates new growth, and supports wildlife like deer, moose, and fire-specialist insects.



## LANDSCAPE MOSAIC

Historic fire regimes created patchworks of burned and unburned — the biodiversity backbone of healthy boreal ecosystems.

*“Wildfire is critical to healthy ecosystem function.” — Alberta Wildfire Mitigation Strategy, 2026*

## WHAT WE GOT WRONG

# A century of suppression created the conditions we're now fighting.

For more than 100 years, North American wildfire policy prioritized rapid extinguishment of every fire. It worked — in the short term.

### **01 Fuels accumulated.**

Dead wood, duff layers, and ladder fuels built up on the forest floor.

### **02 Forests densified.**

Stand density increased; canopies closed; species diversity narrowed.

### **03 Landscapes homogenized.**

The fire-mosaic was replaced by continuous, highly flammable structures.

*The suppression paradigm thus contributed to the very conditions it sought to prevent.*

THE CORE TRUTH

**“Wildfire has naturally occurred across Alberta’s landscape for thousands of years”**

— Minister Todd Loewen, *Alberta Wildfire Mitigation Strategy* (March 2026)

# For millennia, fire was tended — not fought.

Long before provincial wildfire management, Indigenous Nations across what is now Alberta — Cree, Blackfoot, Dene, Nakoda, and Métis — used fire as a deliberate landscape-management tool.

## **Cultural burning supported:**

- Wildlife forage and habitat
- Fuel load reduction
- Biodiversity and plant regeneration
- Landscape mosaics and visibility

## **WHAT HAPPENED NEXT**

In the late 19th and early 20th centuries, colonial fire policy criminalized Indigenous burning. Communities were displaced from traditional territories. Intergenerational transmission of fire knowledge was interrupted — actively suppressed, in many cases.

*Lewis, 1982 • Lake & Christianson, 2019 • Huffman, 2013*

THE SHIFT

# The question changes.

BEFORE

*How do we eliminate wildfire risk?*

NOW

**How do we learn to live with wildfire?**

---

***From mastery over fire → to accountability within fire-adapted ecosystems.***

# 03

PART THREE

## Alberta's answer.

*The Wildfire Mitigation Strategy — March 2026.*



# Alberta Wildfire Mitigation Strategy

***"A wildfire-resilient Alberta, empowering the whole-of-society to achieve long-term wildfire mitigation, through collaboration and innovation."***

— Published March 2026 by Forestry and Parks, Government of Alberta

## WHOLE-OF-SOCIETY

Not just Alberta Wildfire. Everyone.

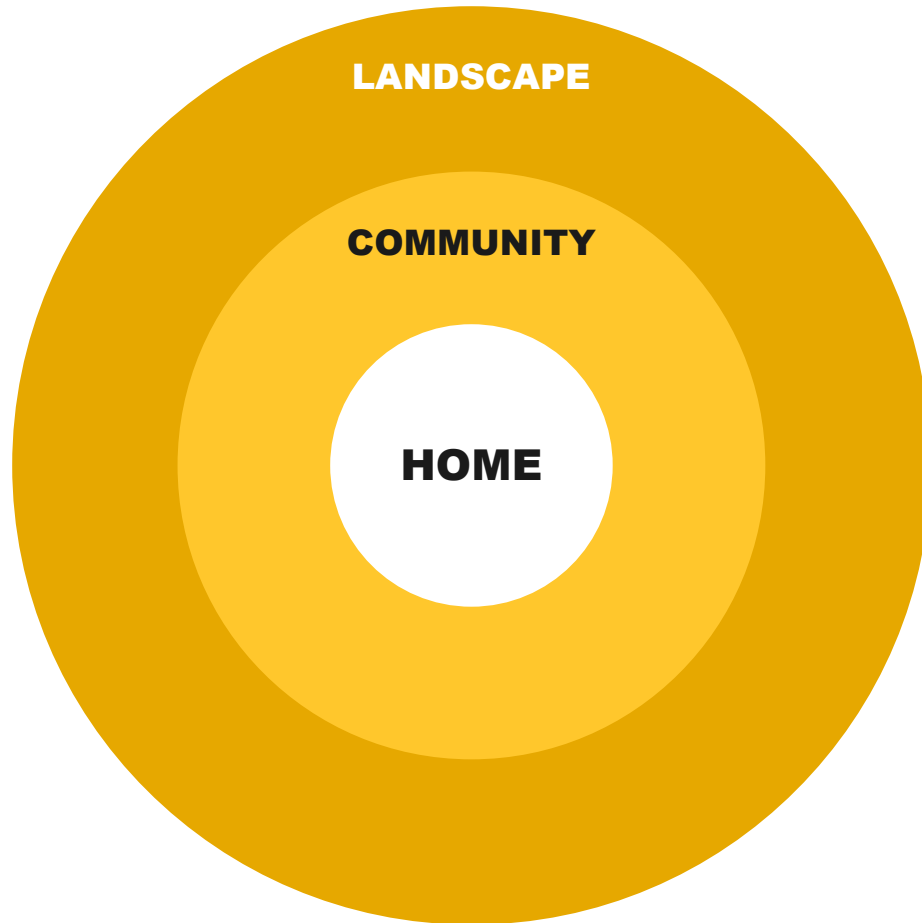
## COLLABORATION

Jurisdictional seams, solved on purpose.

## INNOVATION

New tools, applied at speed.

# Three scales. One coordinated response.



## HOMEOWNER

The Home Ignition Zone. 0–30 m around every structure. Embers, vegetation, materials, clearance.

## COMMUNITY

The municipality and town/city scale. Manage hazardous fuels, plan-develop-build FireSmart, and educate.

## LANDSCAPE

The various stakeholders around your communities. Hazardous fuels management and reducing risk potential.

# Six themes

01



**Knowledge &  
Understanding**

02



**Community &  
Indigenous  
Partnerships**

03



**Legislation, Policy  
& Governance**

04



**Technology  
& Innovation**

05



**Landscape  
Planning**

06



**Hazardous Fuels  
Management**

THANK YOU

**Let's continue this conversation.**

STAY IN TOUCH

**Michael Coutu**

FireSmart Specialist • Forestry and Parks

[firesmart@gov.ab.ca](mailto:firesmart@gov.ab.ca) • [firesmartalberta.ca](http://firesmartalberta.ca)



# Building Urban Wildfire Resilience

*Edmonton's WUI Wildfire Risk Strategy*

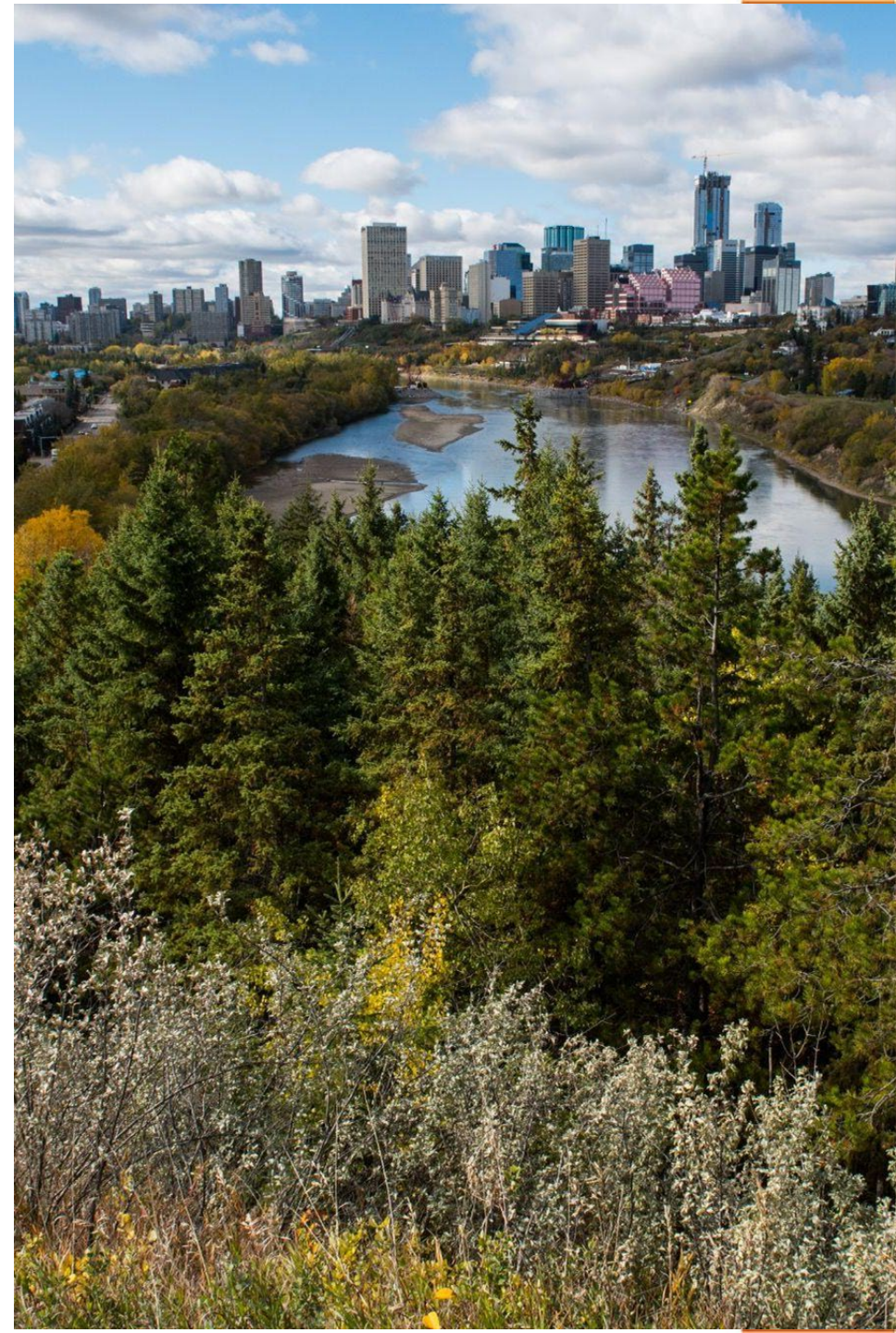
Speaker: Ashley Hynes, City of Edmonton

## Land Acknowledgement

The City of Edmonton acknowledges the traditional land on which we reside, is in Treaty Six Territory. We would like to thank the diverse Indigenous Peoples whose ancestors' footsteps have marked this territory for centuries, such as nêhiyaw (Nay-hee-yow) / Cree, Dene (Deh-neyh), Anishinaabe (Ah-nish-in-ah-bay) / Saulteaux (So-toe), Nakota Isga (Na-koh-tah ee-ska) / Nakota Sioux (Na-koh-tah sue), and Niitsitapi (Nit-si-tahp-ee) / Blackfoot peoples. We also acknowledge this as the Métis' (May-tee) homeland and the home of one of the largest communities of Inuit south of the 60th parallel. It is a welcoming place for all peoples who come from around the world to share Edmonton as a home. Together we call upon all of our collective, honoured traditions and spirits to work in building a great city for today and future generations.

## Project Background

- The **Wildland-Urban Interface (WUI)**, defined as the zone where human development meets undeveloped wildland vegetation, is expanding as Canadian municipalities continue to grow
- Increasing wildfire frequency and severity due to longer fire seasons and drier conditions as a result of climate change



## Lessons Learned

- **2016 Fort McMurray wildfire:** \$9 billion in insured losses
- **2024 Jasper wildfire:** \$1.23 billion in insured losses
- **Key contributing factors to structure loss:** Distance to nearby structures, lack of home hardening, inadequate defensible spaces.



# Strategy Development Process

## TECHNICALLY SOUND

- Jurisdictional scan
- Wildfire exposure modelling (*U of A*)
- Risk assessment
- Expert advice (*Wildland Firefighters, Ecologists, Planners, etc.*)

## COMMUNITY SUPPORTED

- 4,500+ public participants (*pop-up events, workshops, virtual sessions, surveys*)
- Indigenous organizations and Knowledge Keepers
- Businesses and development community
- Utility companies
- Environment and conservation groups
- Community groups

# 4 Strategic Pillars for Wildfire Resilience



## REDUCE

Vegetation  
Management  
Legislation  
Development



## EDUCATE

Education



## RESPOND

Emergency  
Planning  
Cross Training



## COORDINATE

Interagency  
Cooperation

# Addressing Competing Priorities

| Competing Priority         | Wildfire Intersection                        | Integrated Solution                                       |
|----------------------------|--|---|
| <b>Urban Density</b>       | Structure-to-structure spread                | Zoning bylaw regulations and defensive space incentives   |
| <b>Urban Forest Canopy</b> | Contiguous fuels                             | Low-flammability species selection                        |
| <b>Social Equity</b>       | Vulnerable populations                       | Targeted education, outreach, emergency response planning |
| <b>Limited Resources</b>   | Cost of hazard mitigation outside of the FPA | Data-driven prioritization of high-exposure sites         |

# WUI Wildfire Risk Strategy - Action Plan



## REDUCE

- Wildland Fuel Treatment Program
- Property Owner Incentives
- Bylaw, Policy, and Standard Updates



## EDUCATE

- Targeted Outreach
- Promoting Community Action
- Public Surveys



## RESPOND

- Structure Protection Plans
- Tactical Wildfire Response Planning & Training
- Wildfire Data Monitoring Program



## COORDINATE

- FireSmart Action Group
- Indigenous Cultural Burn Program
- Mutual Aid Agreement Updates

*Wildfire resilience is not a fixed goal, but a continuous process requiring ongoing monitoring, adaptation, and sustained collaboration by all.*

# Thank you

[edmonton.ca/WildfireStrategy](https://edmonton.ca/WildfireStrategy)  
[wildfirestrategy@edmonton.ca](mailto:wildfirestrategy@edmonton.ca)

| **SHARE** YOUR VOICE  
**SHAPE** OUR CITY

**Edmonton**

# FireSmart and Wildfire Risk Reduction: RMWB

Presenter: Alan Gammon, FireSmart Program Manager

Department: Regional Emergency Services

Meeting Date: June 2, 2026



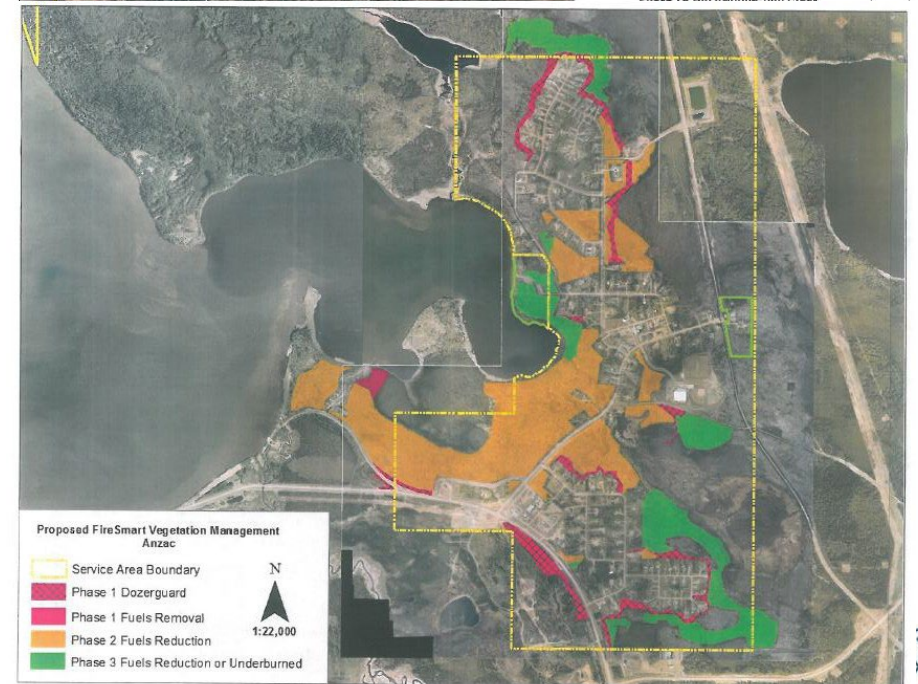
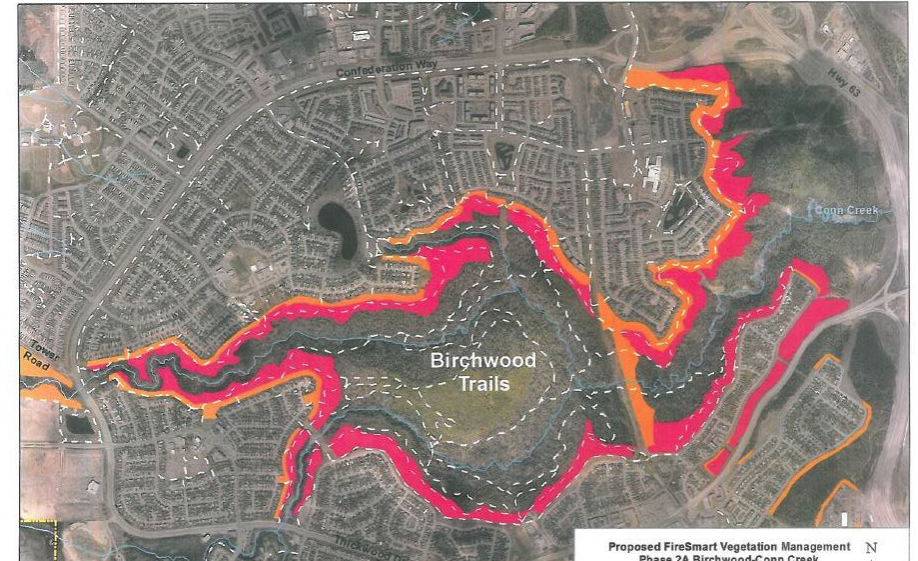
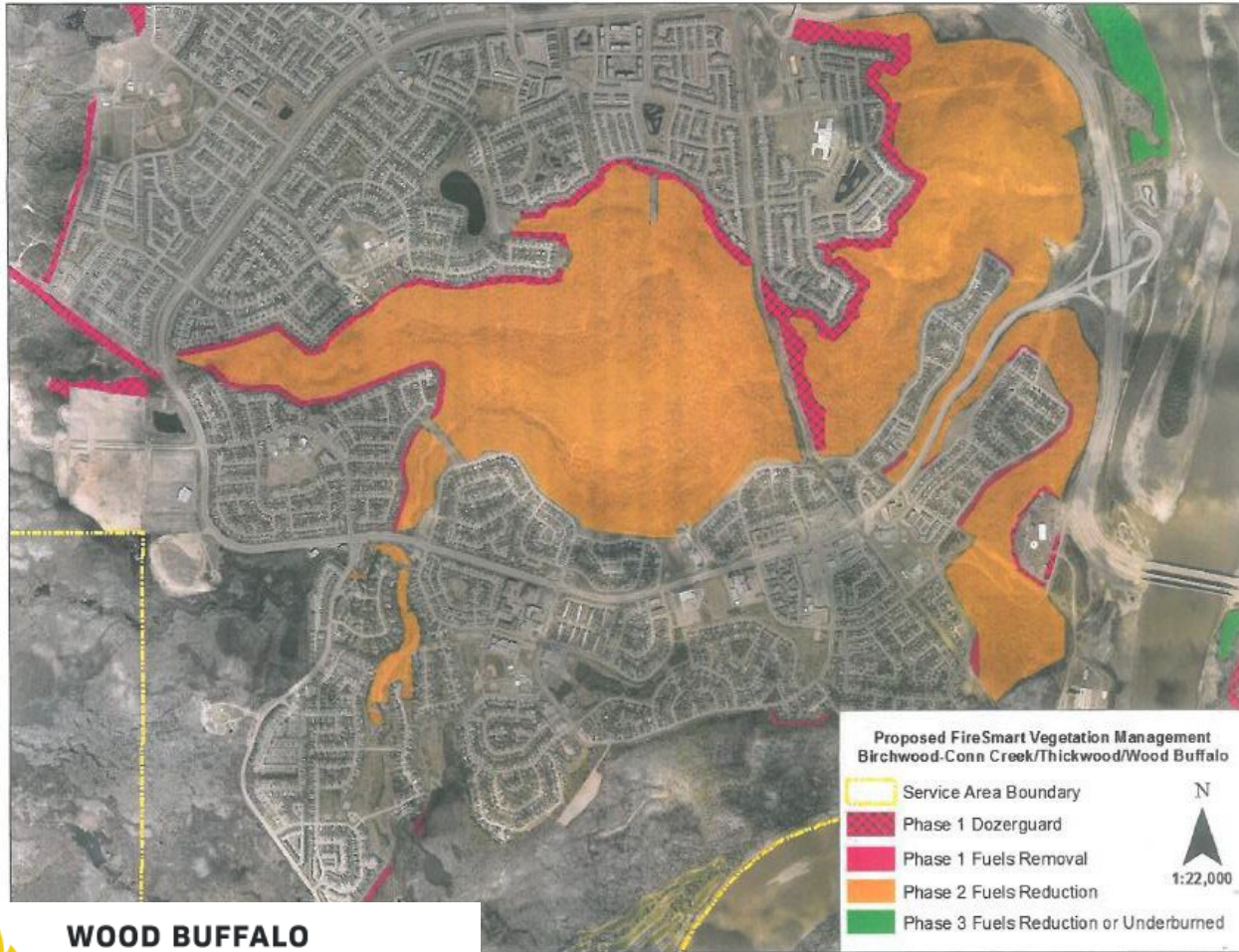
REGIONAL MUNICIPALITY  
OF WOOD BUFFALO

# RMWB FireSmart: History

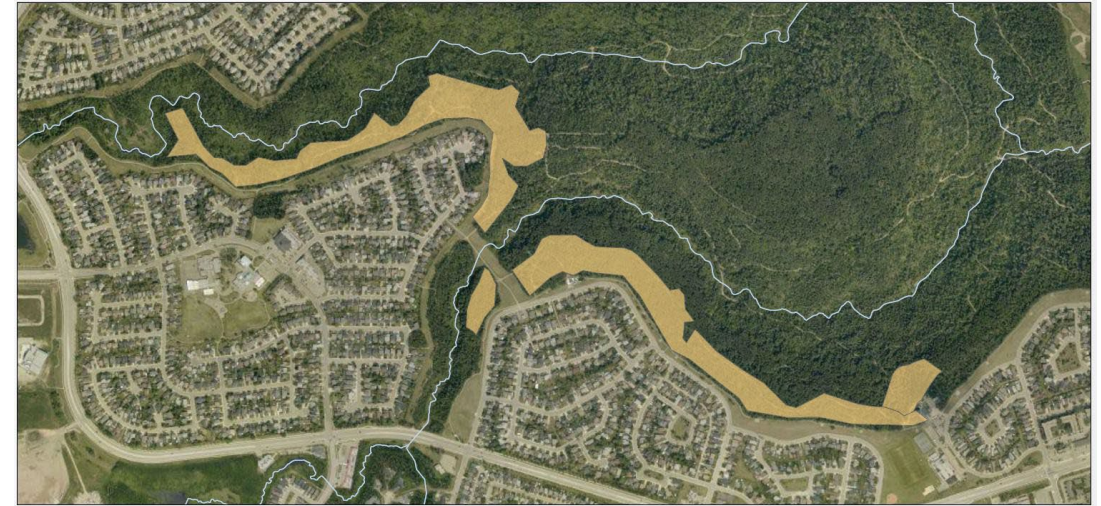
- Birchwood Trails-Dickensfield FireSmart: 2004-06
- Lead by WUI Committee
  - Consisted of RMWB + ASRD (AB Wildfire) staff
- Primary focus: Vegetation Management & Burn Abatement
- Key Location: Urban Service Area



# FireSmart: 2016



# FireSmart: 2025/26



- Birchwood Trails Vegetation Management Retreatment Project
- 8ha completed along Cornwall Drive & Duncan Drive



# FireSmart: 2026 / 27



FireSmart Map  
Ross Haven



Conklin FireSmart  
Treatment Areas 2026

- Conklin FRJAA 2026 - Mulch - 6.1ha
- Conklin FRJAA 2026 - Hand Thin - 4.5ha

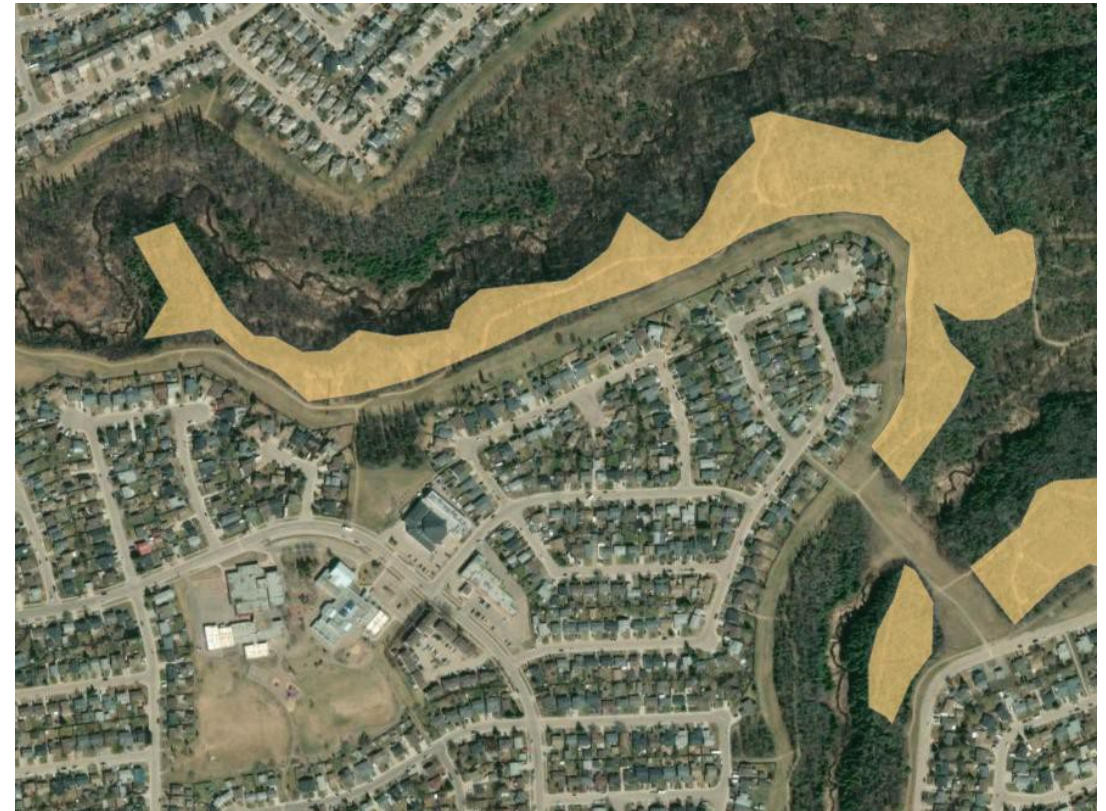
Scale: 1:5,000

0 55 110 220 Meters

FireSmart 2025

Map Produced by the Geographic Information Systems Department  
Regional Municipality of Wood Buffalo

# FireSmart: 2006 - 2026



# Community Fireguards

- Planning Contractor hired for Hamlet of Janvier Fireguard
- Fireguard Planning Committee (FRIAA Funded)
- Focus: Conklin & Fort McMurray



# Wildland Urban Interface Crew

- RMWB RES will be hiring 2 Full time Staff
- Goal is to expand to a crew of 4
- Crew will meet or exceed Provincial WUI Standards
- Long-term: 1 Certified Structure Protection Specialist (SPS)



# Burn Abatement & Hazard Reduction:

- Burn Crew Established and burning from May - July
- Increased areas for 2026: ~45ha
- Partnership with AB Forestry: Fort McMurray & Lac La Biche Offices
- Areas to be considered for Fall Abatement



# Wildfire Mitigation Strategy

- 3<sup>rd</sup> Iteration of WMS
- Will cover off mitigation and FireSmart activities for the region
- 2027- 2031
- Will build upon the successes from the 2017 & 2022 strategies



## Regional Municipality of Wood Buffalo Wildfire Mitigation Strategy



Prepared for:  
Regional Municipality of Wood Buffalo FireSmart Committee



December 2017

Stew Walkinshaw, R.P.F.

**MONTANE**  
Forest Management Ltd.  
Canmore, AB.

Phone: (403) 678-7054 Email: montane@shaw.ca

## Regional Municipality of Wood Buffalo Wildfire Mitigation Strategy Review



Prepared for:



October 2022

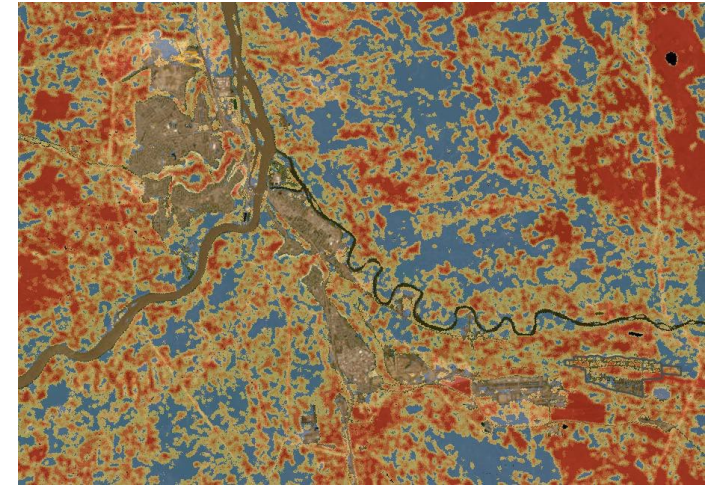
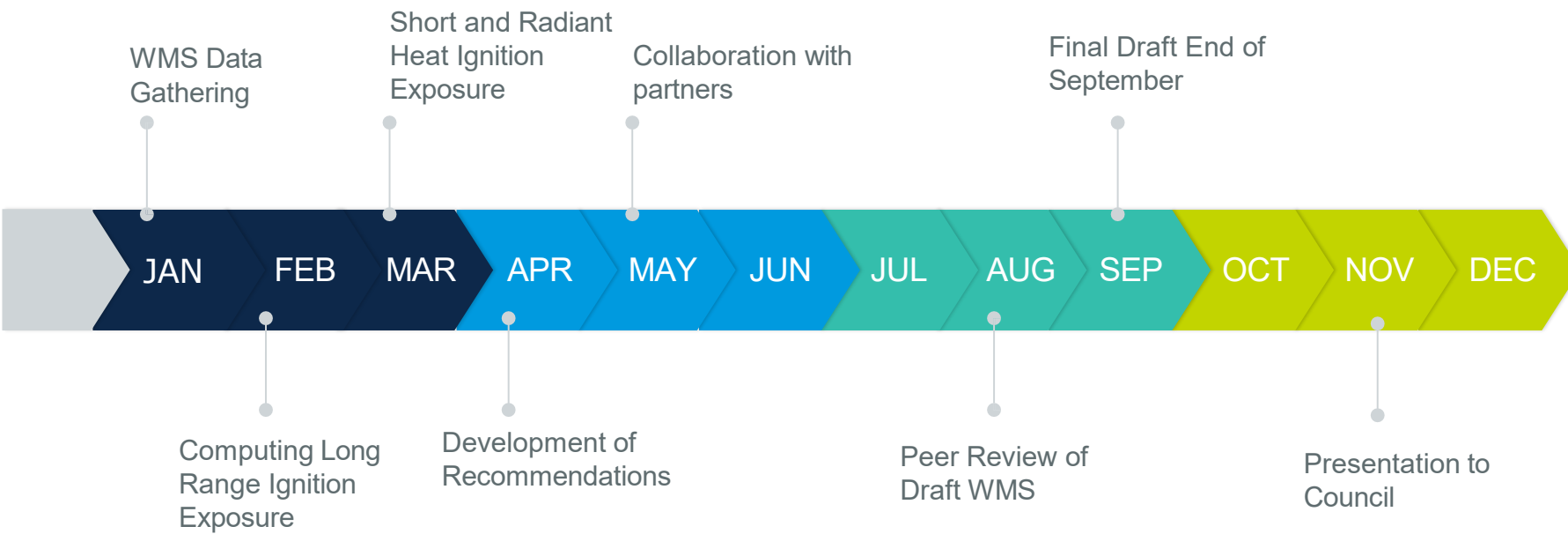
Stew Walkinshaw, R.P.F.

**MONTANE**  
Forest Management Ltd.  
Canmore, AB.

Phone: (403) 678-7054 Email: montane@shaw.ca



# Wildfire Mitigation Strategy Timelines:



Directional Vulnerability



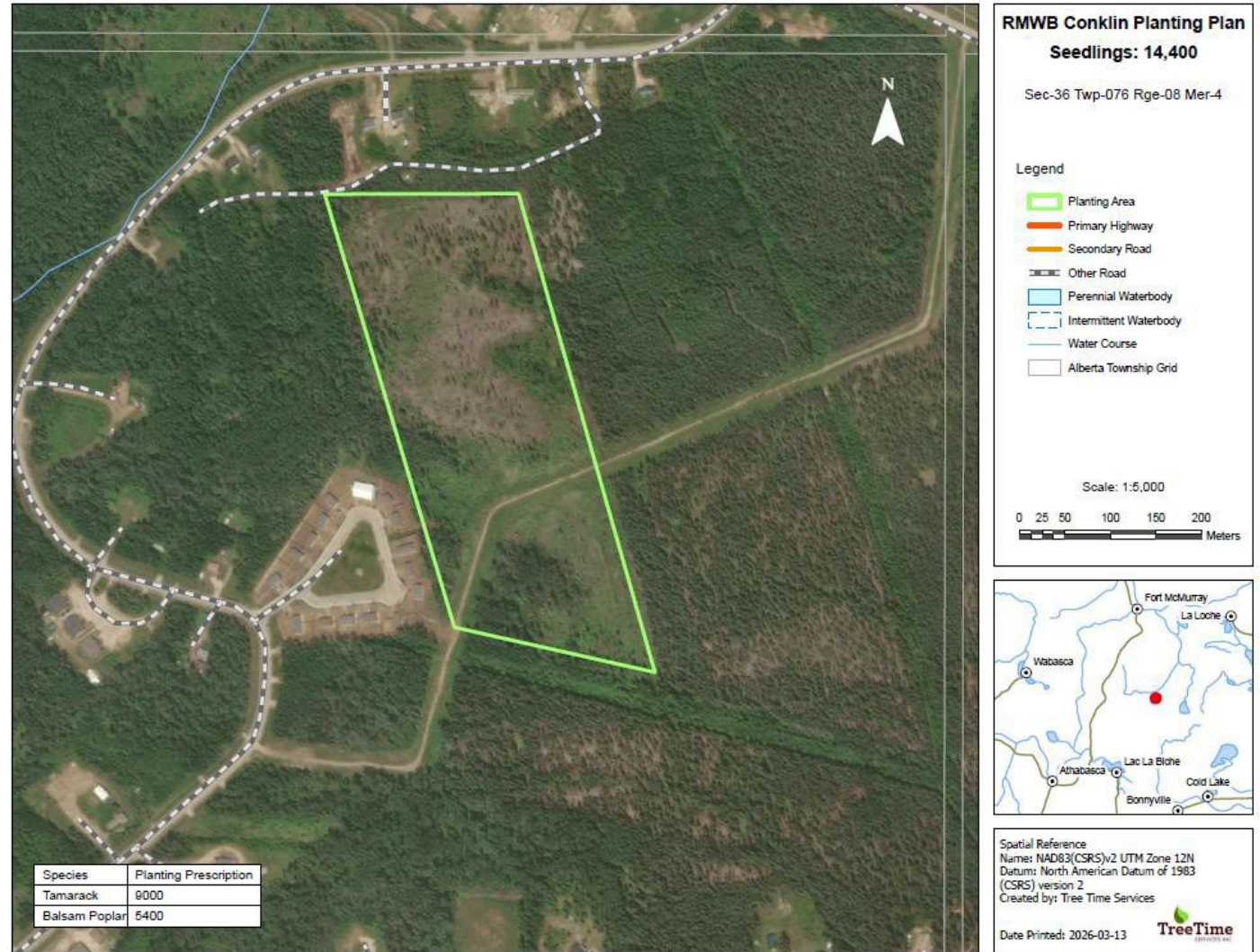
# FireSmart – Not Just Vegetation Removal

- Tree and Shrub planting project
- Highway 686, Parson's Creek Overpass
- Establish FireSmart Species to provide:
  - Soil stability and Erosion control
  - Enhanced biodiversity
  - Aesthetics & Community Value
  - Maintain a reduction in wildfire behaviour



# FireSmart – Not Just Vegetation Removal

- Tree planting project Conklin
- Tamarack & Balsam Poplar
- 9ha
- 3-4m spacing between trees
- 1,200 tree per ha



# FireSmart Home Assessments & Home Rebate Program

- 443 Home Assessments Completed in 2025
  - 303 in Fort McMurray
  - 135 Fort McKay
- \$180,000 delivered to residents through home rebate program (RMWB, Intact Insurance & Red Cross Funded)
- \$245,000 available for Home rebate program in 2026



## Advanced FireSmart Home Assessment



# Mitigation Efforts & Positive Outcomes: McMurray Floods 2020/2026



# Interagency Cooperation

- All of Society approach to wildfire mitigation efforts
- Interagency cooperation remains a cornerstone to achieving results

## Applying the FireSmart™ System to Strengthen Community Wildfire Resilience



### Enhance Collaboration and Coordination



Interagency Cooperation

### Educate and Empower the Whole of Society



Education

### Reduce Wildfire Risk



Vegetation Management



Legislation



Development

### Improve Wildfire Response



Emergency Planning



Cross Training



FireSmart™, Intact-Res and other associated Marks are trademarks of the Canadian Interagency Forest Fire Centre (CIFFC)

